

HabasitLINK[®]

M1230 Flush Grid 0.5"



Your Source For Habasit
Belting And Chain

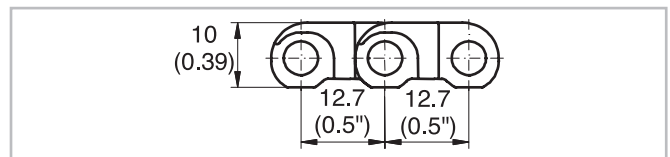
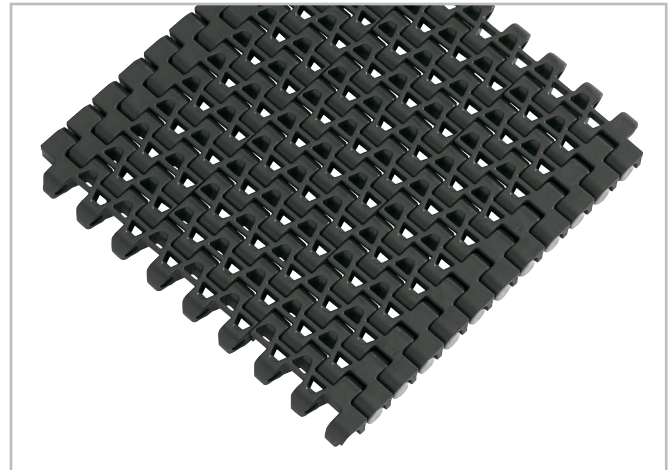
www.StilesEnterprises.com • 1-800-325-4232

Description

- "Nosebar transfer", recommended diameter 18 mm (0.71"); 16 mm (0.63") possible
- 18% open area; 70% open contact area; largest opening 5x3.3 mm (0.2"x0.13")
- Stiff 0.5" Flush Grid design
- Open hinge
- Food approved materials available
- Rod diameter 5 mm (0.2")
- "Open window" sprockets

Available accessories

- GripTop modules



Belt data

Belt material		PP	PE	POM	
Rod material		PP	PE	PP	PA
Nominal tensile strength F' _N straight run	N/m	11000	7000	16000	18000
	lb/ft	753	480	1096	1233
Temperature range	°C	5 - 105	-70 - 65	5 - 93	-40 - 93
	°F	40 - 220	-94 - 150	40 - 200	-40 - 200
Belt weight m _B	kg/m ²	5.4	5.7	7.8	7.8
	lb/sqft	1.11	1.17	1.60	1.60

Diameter of idling rollers (minimum)		Diameter of support rollers (minimum)		Diameter for gravity take-up and center drive rollers (minimum)		Backbending radius for elevators without side guards or hold down devices (minimum)		Backbending radius for elevators with sideguards or hold down devices (minimum)	
mm	inch	mm	inch	mm	inch	mm	inch	mm	inch
18	0.7	50	2	75	3	150	6	250	10

Use the largest possible backbending radius for elevators with side guards or hold down devices.

Standard range of belt widths b₀

mm (nom.)	150	200	250	300	350	400	450	500	550	600	650	700	750	800	etc.
inch (nom.)	6	8	10	12	14	16	18	20	22	24	26	28	30	32	etc.

Real belt widths are in most cases 0.1% to 0.3% smaller.

Real belt widths for PP are 0.1% to 0.3% wider.

Standard belt widths in increments of 50 mm (2"). Non-standard widths are offered in increments of 16.66 mm (0.66"). Smallest possible width 83.4 mm (3.25").

For detailed material properties refer to the HabasitLINK[®] Engineering Guidelines or contact your Habasit representative.

The nominal tensile strength is valid for 23 °C (73 °F). The admissible tensile force depends on the operating temperature near the drive sprockets. Within the temperature range allowed, the admissible tensile force may vary from 100% to 20% of the nominal tensile strength. For detailed information and correct calculation of effective tensile force refer to the Calculation Guide in the HabasitLINK[®] Engineering Guidelines.